

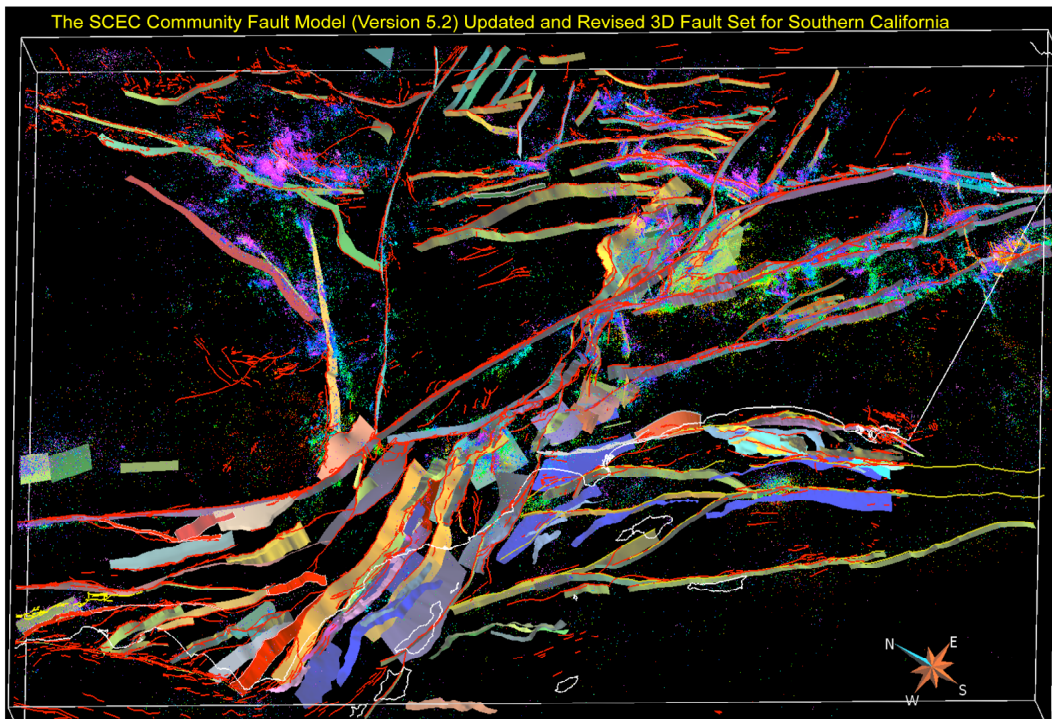
**2017 SCEC ANNUAL TECHNICAL REPORT - SCEC Award 17066**  
**Refine 3D Fault & Deformed Surface Geometry to Update & Expand**  
**the SCEC Community Fault Model**

**Craig Nicholson**

*Marine Science Institute, University of California, Santa Barbara, CA 93106-6150*

## Summary

During SCEC4 and through 2017, I and my colleagues Andreas Plesch, Chris Sorlien, John Shaw and Egill Hauksson continued to make steady and significant improvements to the SCEC Community Fault Model (CFM), culminating in the recent release of CFM-v5.2 [Nicholson *et al.*, 2017]. This systematic and on-going update to CFM represents a substantial improvement of 3D fault models for southern California. The CFM-v3 fault set was expanded from ~170 faults to over 850 3D fault objects and alternative representations that define nearly 400 faults organized into 105 complex fault systems (Fig.1). Most of these updated 3D fault models were developed by UCSB, or to which UCSB made significant contributions. This includes all the major faults of major fault systems (*e.g.*, San Andreas, San Jacinto, Elsinore-Laguna Salada, Newport-Inglewood, Imperial, Garlock, *etc.*), and most major faults in the Mojave, Eastern & Western Transverse Ranges, Coast Ranges, offshore Borderland, and updated faults within Special Fault Study or Earthquake Gate Areas [Nicholson *et al.*, 2012, 2013, 2014, 2015, 2016, 2017; Sorlien *et al.*, 2012, 2014, 2015, 2016; Sorlien and Nicholson, 2015]. These new models allow for more realistic, curvilinear, complex 3D fault geometry, including changes in dip and dip direction along strike and down dip, based on the changing patterns of earthquake hypocenter alignments and, where possible, subsurface imaging of fault geometry with seismic reflection data. In 2015-2017, 150 new updated 3D fault objects were added to CFM-v5.2 since the initial release of v5.0.



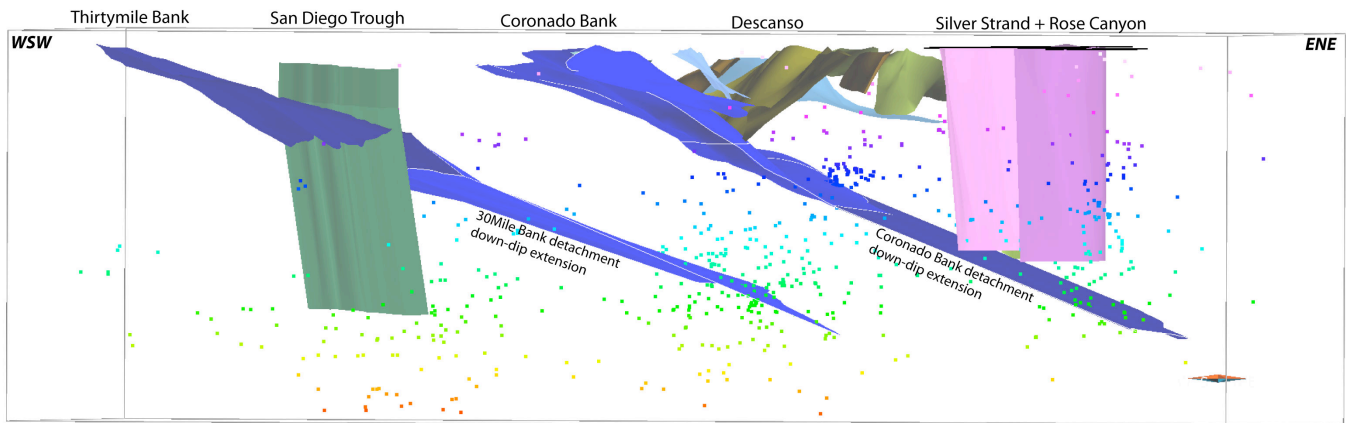
**Figure 1.** Oblique 3D view looking NE of CFM-v5.2 fault models, plus Qfault surface traces (red lines), and relocated seismicity [Nicholson *et al.*, 2017]. For 2017 alone, updates to CFM include 30 new or updated fault models located in the Borderland, Coast Ranges and Western Transverse Ranges, including Ventura Special Fault Study Area and Cajon Pass Earthquake Gate Area. Relocated hypocenters (1981-2016) from Hauksson *et al.* [2012 + recent updates].

## Technical Report

Under the SCEC research organization, many aspects of earthquake forecasting (EFP) and seismic hazard evaluation (UCERF3), including developing credible earthquake rupture scenarios (Cybershake) and simulations (CISM), predicting strong ground motion (GM), understanding the mechanical behavior of faults (FARM), and modeling stress, crustal deformation (SDOT), or geodetic and geologic fault slip rates (SAFS), as well as successful development of related community models (CXM), are all strongly dependent on accurately resolving the 3D geometry of active faults at seismogenic depths. For this

reason, a considerable effort within SCEC has been focused on developing, updating and improving the SCEC 3D Community Fault Model (CFM) and its associated Unified Structural Representation of the crust and upper mantle for southern California [e.g., Plesch *et al.*, 2007, 2016; Nicholson *et al.*, 2015, 2016, 2017; Shaw *et al.*, 2015]. Such efforts to update and improve CFM are fundamental to SCEC's primary research objectives if we are to better understand the geometry of the San Andreas system as a complex network of faults, and other aspects of fault kinematics, dynamic rupture, strain accumulation and stress evolution. Because of this need, during SCEC4 and continuing into SCEC5, hundreds of new, updated or alternative 3D fault models for major active faults and fault systems were added to CFM (**Fig.1**), resulting in fault representations that are more precise and often more complex, segmented, curvilinear and multi-stranded than in previous CFM model versions.

As part of our on-going group efforts to update, expand and improve CFM, this project added many new, updated or revised 3D fault models to CFM in the Inner Borderland and Coast Ranges, and in the Western Transverse Ranges associated with the Ventura Special Fault Study Area (SFSA) or Cajon Pass Earthquake Gate Area (EGA). The Borderland fault updates to CFM included an updated and improved Newport-Inglewood fault, and extending the active Thirtymile Bank and Coronado Bank detachments imaged at shallow depth using seismic reflection data to seismogenic depths based on correlations to relocated seismicity and focal mechanism nodal planes provided by Hauksson *et al.* [2012] and Yang *et al.* [2012](**Fig.2**). These new down-dip extensions have significant implications for how high- and low-angle faults may interact and intersect, the down-dip extent of high-angle strike-slip faults, and the prospect for potential larger complex, multi-fault ruptures in the offshore Borderland [Legg *et al.*, 2018], similar to the recent, complex 2016 M7.8 Kaikoura, NZ event [e.g., Hamling *et al.*, 2017].

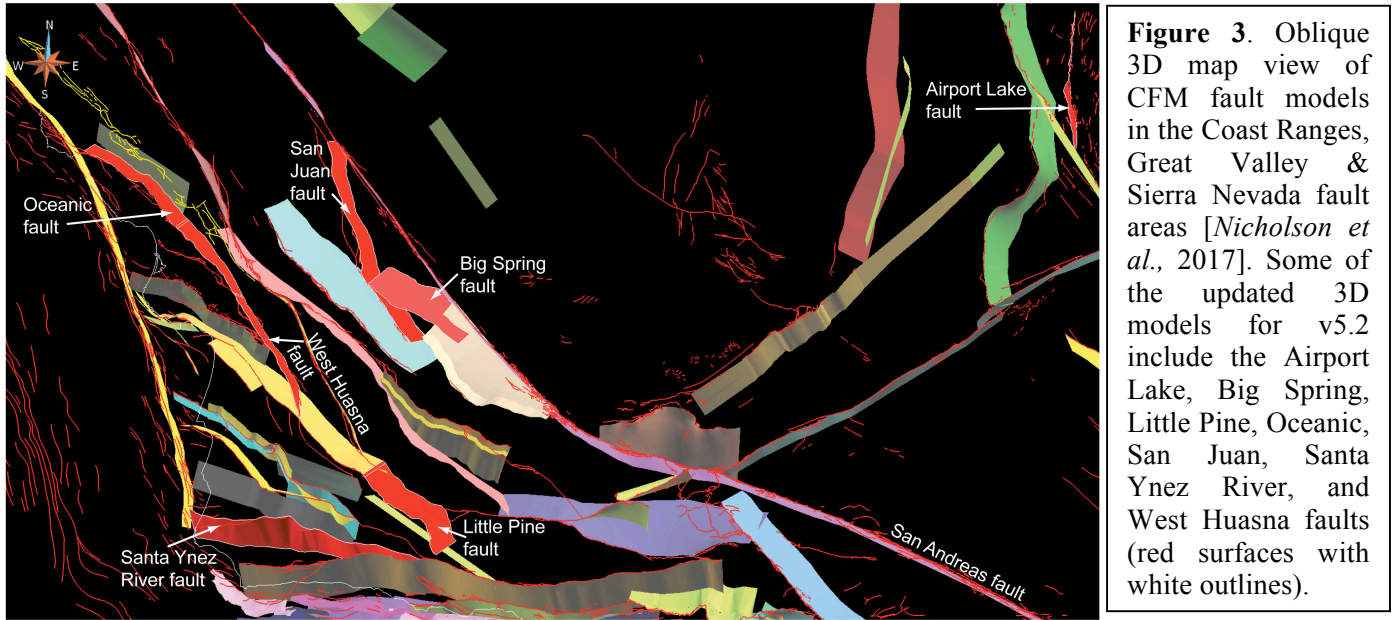


**Figure 2.** Cross sectional view looking WNW of CFM-v.5.2 3D fault surfaces with updated relocated seismicity (1981-2016) from [Hauksson *et al.*, 2012 + updates] color coded by focal depth. Alignments of hypocenters and nodal planes along the down-dip projection of the E-dipping Thirtymile Bank and Coronado Bank detachment faults indicate that these stacked low-angle detachments are likely seismically active [Legg *et al.*, 2018].

New or revised CFM fault surfaces in the Coast Ranges and Sierra Nevada fault areas developed in collaboration with Andreas Plesch include the Airport Lake, Big Springs, Little Pine, Oceanic plus West Huasna, San Juan and Santa Ynez River faults (**Fig.3**)[Nicholson *et al.*, 2017]. These faults expand the 3D fault set previously developed under SCEC4, and provide an alternative explanation for the observed patterns of local geodetic uplift previously attributed to a ramp geometry and faults south of the Santa Ynez Range [Marshall *et al.*, 2017] that did not otherwise account for these newly added CFM faults.

In addition to expanding the 3D CFM fault set for southern California and related issues of fault model completion and extending faults deeper with relocated seismicity, there are also issues regarding fault model *evaluation*, model *validation*, and how to properly discriminate between various competing alternative representations. For example, in the Ventura SFSA, there is still a persistent, major on-going controversy regarding the faults responsible for the large vertical uplift events found at Pitas Point [Rockwell *et al.*, 2014, 2016]. One model postulates that these uplift events are driven exclusively by slip on the N-dipping Pitas Point-Ventura fault (PPVF), that the size of the uplift events is characteristic

of the average slip over the fault during rupture, and that the PPVF exhibits a distinctive ramp-flat-ramp geometry, with a flat detachment at 7 km depth [e.g., Hubbard *et al.*, 2014; Rockwell *et al.*, 2016]. The alternative model considers the uplift events at Pitas Point to be anomalous and localized, and therefore not representative of the average slip at depth further along strike during rupture; to consider the PPVF—and the Red Mountain fault with which it merges—to be relatively steeply dipping to depths of 18-20 km without a flat detachment, and that the uplift at Pitas Point is primarily driven by slip on the S-dipping Padre Juan fault that forms the San Miguelito anticline, its interaction with the PPVF, and/or the result of a localized restraining bend or possible tear fault in the PPVF [Nicholson *et al.*, 2015; 2016].

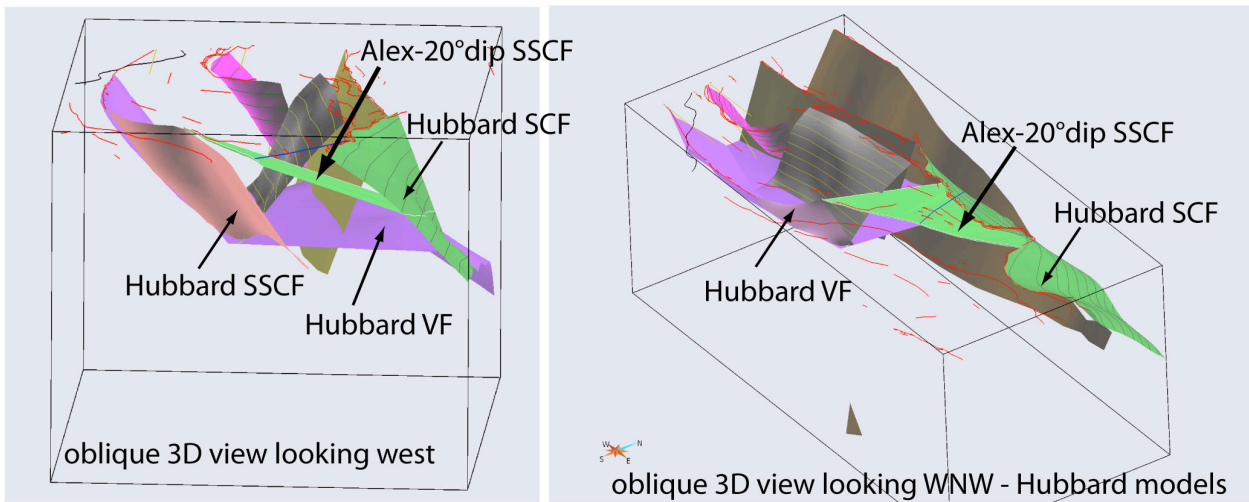


**Figure 3.** Oblique 3D map view of CFM fault models in the Coast Ranges, Great Valley & Sierra Nevada fault areas [Nicholson *et al.*, 2017]. Some of the updated 3D models for v5.2 include the Airport Lake, Big Spring, Little Pine, Oceanic, San Juan, Santa Ynez River, and West Huasna faults (red surfaces with white outlines).

Given the absence of seafloor deformation or Holocene fault offset west of Pitas Point on the PPVF, an additional postulate to account for the possible occurrence of proposed, multiple ~M8 earthquakes is that the PPVF is linked farther east to the San Cayetano fault [Hubbard *et al.*, 2014]. The proposed linking structure was called the Southern San Cayetano fault (SSCF), but as no data were provided to confirm its existence or orientation, the proposed SSCF could dip either north or south [Hubbard *et al.*, 2014]. If the SSCF did dip north, similar to the Ventura fault with which it was intended to connect, then it was presumed to dip at 45°-50° and was located in the middle of the Santa Clara River Valley.

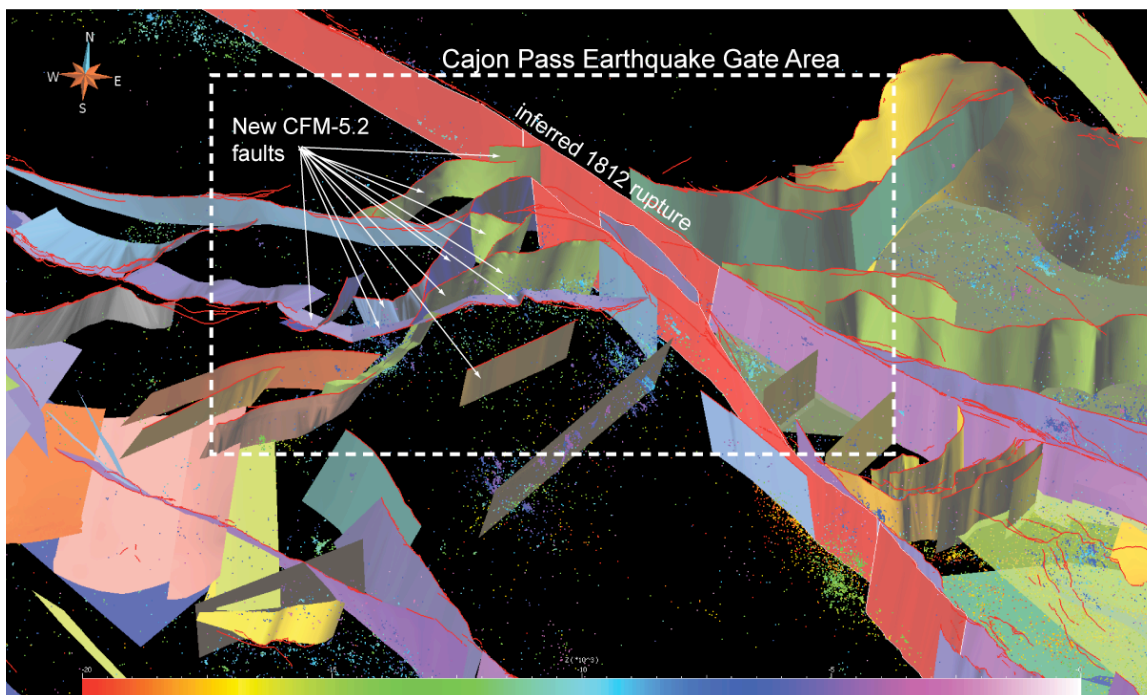
Recent geologic mapping, in combination with industry well data document the presence of a young, active, low-angle fault along the north side of the basin that would seem to connect the Ventura fault to the San Cayetano fault [Rood, 2016; Hughes *et al.*, 2018]. At its eastern end, this revised, updated proposed SSCF matches the location and dip of the previously identified Pagenkopp fault based on correlating industry subsurface well data [Çemen, 1989; Hopps *et al.*, 1992]. The primary difference between this new, low-angle SSCF and the older proposed version is that it dips north at ~20° and is located along the range-front rather than out in the middle of the basin. **Figure 4** shows oblique CFM 3D views for this new SSCF (green, Alex-20°) in relation to the older Hubbard SSCF model (orange)(**Fig.4, left**), and the disparity in dip between the new, low-angle SSCF (green) in relation to the more steeply N-dipping Ventura fault (VF, purple) and San Cayetano fault (SCF)(**right**). Although in oblique map view (**Fig.4, right**), the new, low-angle SSCF does connect the Ventura and San Cayetano faults at the surface, the disparity in their dips suggests, however, that there may not be an adequate link at seismogenic depths to allow slip to propagate between these two fault systems during dynamic rupture, as many people had originally believed if there was indeed an active, connecting SSCF present. Thus, it is unclear what the seismic hazard potential is for this newly identified, low-angle SSCF, as it currently exhibits relatively small cumulative displacement, it is confined to the shallow crust and it is unclear if it can rupture independently of the SCF or link ruptures between the VF & SCF.





**Figure 4.** (left) Oblique view looking west of CFM surfaces for old, steeply N-dipping proposed Southern San Cayetano fault (SSCF) (orange) [Hubbard *et al.*, 2014] versus the newly identified, alternative, active low-angle SSCF (green, Alex-20°)[Hughes *et al.*, 2018]. (right) Oblique view looking down to the WNW with the older SSCF now missing. This view shows how the low-angle, range-front SSCF connects the Ventura (VF) and San Cayetano faults (SCF) at the surface, but not at seismogenic depths where most earthquakes tend to propagate.

Besides continuing to evaluate and help discriminate between alternative fault representations (like the Hubbard SSCF versus low-angle SSCF), a considerable effort of this project, in conjunction with my colleagues Julian Lozos and Nate Onderdonk, was focused on developing and promoting the Cajon Pass Earthquake Gate Area Initiative [Nicholson and Lozos, 2017; Lozos *et al.*, 2017] and subsequent Cajon Pass EGA Science Plan, as well as updating and expanding the preliminary CFM 3D fault set associated with the recently designated Cajon Pass EGA (Fig.5)[Nicholson *et al.*, 2017]. Updated 3D fault surfaces for CFM-v5.2 included the Cucamonga fault and Sierra Madre-Cucamonga connector, and newly added secondary San Antonio Canyon, Stoddard Canyon, South Fork-Stoddard Canyon, Icehouse Canyon, Weber and Red Hill faults. These CFM updates also included new updated rupture models for the 1812 [Grant-Ludwig *et al.*, 2015; Lozos, 2016](e.g., Fig.5, red segments) and 1857 earthquakes.

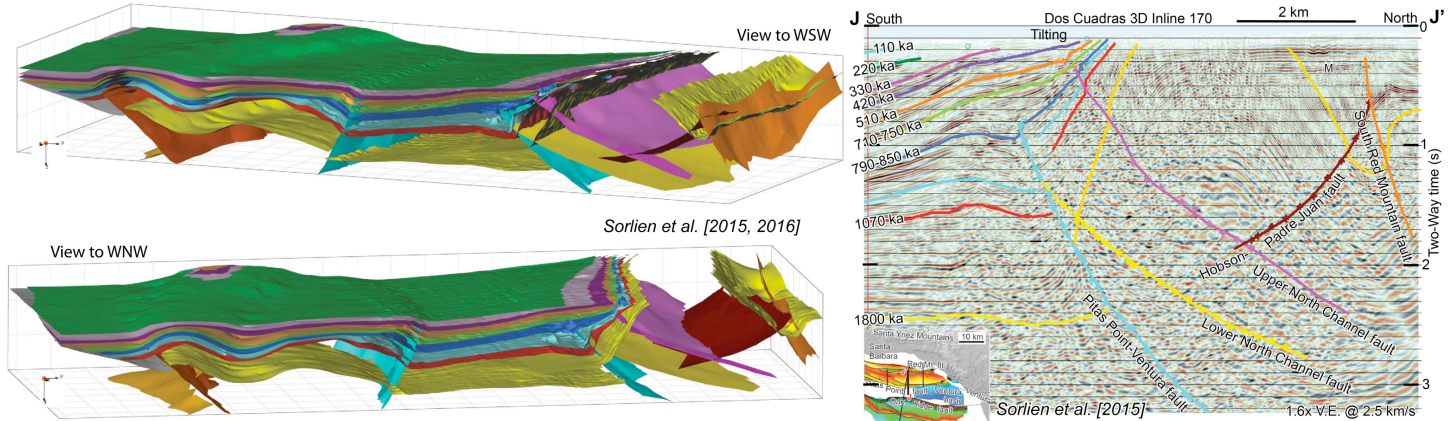


**Figure 5.** Oblique 3D map view looking North of CFM fault models in the Cajon Pass EGA. Updated 3D models for CFM-v5.2 include the Cucamonga fault and Sierra Madre-Cucamonga connector, and new secondary San Antonio Canyon, South Fork, Stoddard Canyon, Icehouse Canyon, Red Hill and Weber faults. Red colored sections of the San Andreas & San Jacinto faults represent the updated rupture model for the 1812 M7.5 earthquake [Lozos, 2016].



It should be noted that these preliminary CFM fault models for the Cajon Pass EGA are not yet complete. Many still need to be properly evaluated and validated, and even for the major through-going strike-slip faults, like the San Andreas and San Jacinto, it is still not clear the extent to which these major faults do or do not physically merge at depth. Currently in CFM, neither the San Jacinto and San Andreas faults actually intersect at depth, nor do the Cucamonga and San Andreas faults.

One of the enhancements to CFM that we had hoped to introduce with SCEC5 is the incorporation of more geological, lithologic or rheological surfaces into CFM besides faults. CFM already includes important boundaries like top-basement, base seismicity, and various local detachment surfaces. Expansion of the CFM digital surface library to include other useful surfaces and material interfaces, like the dated, deformed stratigraphic reference horizons mapped offshore in the Santa Barbara Channel (Fig.6)[Sorlien *et al.*, 2016] and onshore in the Ventura basin [Hopps *et al.*, 1992] can provide a geologic framework for quantifying finite strain, modeling rates of off-fault and fault-related fold deformation, and helping to provide a foundation for other CXM initiatives, like the Community Rheological Model. Unfortunately, delays in funding for 2017, an expanded focus on the Cajon Pass EGA Initiative, and a lack of support in 2018 from SCEC and the CRM for these types of expanded research components for CFM has led to a substantial delay in implementation of these proposed CFM improvements.



**Figure 6.** (left) Oblique 3D views in Santa Barbara Channel looking WNW & WSW of faults and dated stratigraphic reference horizons mapped in 3D with industry MCS data. (right) Example of MCS data from Dos Cuadras 3D survey used to map faults and dated reference horizons that can help model finite strain and better define the CRM.

Besides developing new, updated 3D fault sets for CFM and evaluating alternative representations (Figs.1-5), as part of an on-going companion CFM TAG project, Andreas and I continue to develop, expand and improve the associated database & metadata component of CFM, which is critical for the internal consistency and maintainability of the model. This enhanced database organization enables model users to access and assess the full richness of the various modeled fault systems and alternative 3D models in CFM, and allows for the increasing variety and complexity of multi-stranded principal slip surfaces, adjacent secondary faults, and alternative fault representations that have been or will be developed for CFM to be properly catalogued, registered and coordinated. Outreach activities associated with this project include on-going presentations to various local civic groups and Emergency Response Teams on the hazards associated with earthquakes, tsunamis and landslides, and specific presentations to the South Coast Geological Society and to UC Riverside on CFM, its properties and capabilities to enhance research and earthquake hazard assessment, and on the complexities of major fault systems.

#### **Recent SCEC Project Reports, Publications, and Related Presentations (2016-2017):**

Behl, R.J., C. Nicholson, C.C. Sorlien, J.P. Kennett, C. Marshall, S.H. Decesari and D.E. Escobedo. Chronostratigraphy of the Quaternary Santa Barbara Basin: An integrated geophysical, sedimentologic and paleoceanographic approach, 2016 AAPG Pacific-Rocky Mountain Joint Meeting Program, p.39, Las Vegas, NV (2016).

- DeHoogh, G.L., C.C. Sorlien, C. Nicholson, C.S. Schindler and R.D. Francis, Structure, Evolution and Tectonic Significance of the Eastern Boundary of the Outer Continental Borderland, in *From the Mountains to the Abyss: The California Borderland as an Archive of Southern California Geologic Evolution*, *SEPM Special Publication*, **110**, doi:10.2110/semsp.110.08, in press (2018).
- Hughes, A., D.H. Rood, A.C. Whittaker, R.E. Bell, T.K. Rockwell, Y. Levy, K.M. Wilcken, L.B. Corbett, D.E. DeVecchio, P.R. Bierman, S.T. Marshall, L. D. Gurrola, and C. Nicholson, Geomorphic evidence for the previously unconfirmed Southern San Cayetano fault - implications for multi-fault ruptures and seismic hazards in southern California, *Earth & Planetary Science Letters*, submitted (2018).
- Legg, M., C. Sorlien, C. Nicholson, M. Kamerling, and G. Kuhn, Potential for large complex multi-fault earthquakes offshore southern California, *Proceedings of the 11th National Conference in Earthquake Engineering*, in press (2018).
- Lozos, J.C., C. Nicholson and N.W. Onderdonk, Introducing the Cajon Pass Earthquake Gate Area, *2017 SCEC Annual Meeting Proceedings & Abstracts*, **XXVII**, Tues.talk, p.133 (2017).
- Nicholson, C., Continuing to Evaluate & Update Active 3D Fault Geometry in Special Fault Study Areas and to Improve the SCEC Community Fault Model, *2015 SCEC Annual Report*, n.15154, 9 pp (2016).
- Nicholson, C., Continuing to Evaluate 3D Fault Geometry in Special Fault Study Areas and to Update & Improve the SCEC Community Fault Model, *2016 SCEC Annual Report*, n.16065, 8 pp (2017).
- Nicholson, C., 3D Fault Geometry & Slip History of the North Channel-Pitas Point-Red Mountain Fault System, SCEC Ventura SFSA workshop, *2016 SCEC Annual Meeting Proceedings & Abstracts*, **XXVI**, p.113 (2016).
- Nicholson, C., E. Hauksson and A. Plesch, Active 3D fault geometry along the San Andreas fault system from San Gorgonio Pass to the Salton Sea inferred from seismicity and SSIP subsurface imaging, *South Coast Geological Society's 44th Annual Geological Field Trip: The Mecca Hills & Southern San Andreas Fault Zone*, Nov.4 (2017).
- Nicholson, C., E. Hauksson and A. Plesch, Active fault geometry and crustal deformation along the San Andreas fault through San Gorgonio Pass: The view from below and in 3D from seismicity, *Hewitt Lecture*, UC Riverside, Nov.14 (2017).
- Nicholson, C. and J.C. Lozos, Cajon Pass: A key QuakeGate in Southern California, *SCEC Earthquake Gate Incubator Workshop*, Pomona, CA, March 10 (2017).
- Nicholson, C, A. Plesch, and J.H. Shaw, Community Fault Model Version 5.2: Updating & expanding the CFM 3D fault set and its associated fault database, *2017 SCEC Annual Meeting Proceedings & Abstracts*, **XXVII**, poster 234, p.142-143 (2017).
- Nicholson, C., C.C Sorlien and T.E. Hopps, Anomalous Uplift at Pitas Point: Implications from Onshore & Offshore 3D Fault & Fold Geometry and Observed Fault Slip, *2016 SCEC Annual Meeting Proceedings & Abstracts*, **XXVI**, poster 006, p.216-217 (2016).
- Nicholson, C., C.C Sorlien, T.E. Hopps and M.J. Kamerling, Anomalous Uplift at Pitas Point: Localized Phenomena or Indicator of Tsunamigenic M8 Earthquakes Along Coastal California?, *Eos (Transactions of AGU)*, **97** (52), Abstract OS21A-1935 (2016).
- Plesch, A., C. Nicholson, C. Sorlien, J.H. Shaw and E. Hauksson, CFM Version 5.1: New and revised 3D fault representations and an improved database, *2016 SCEC Annual Meeting Proceedings & Abstracts*, **XXVI**, poster 003, p.222-223 (2016).
- Sorlien, C.C, C. Nicholson, R.J. Behl and M.J. Kamerling, Displacement direction and 3D geometry for the south-directed North Channel–Pitas Point fault system and north-directed ramps, decollements, and other faults beneath Santa Barbara Channel, *2016 SCEC Annual Meeting Proceedings & Abstracts*, **XXVI**, poster 007, p.238-239 (2016).

### **Additional References:**

- Astiz, L., and P. M. Shearer, 2000, Earthquake relocation in the Inner California Borderland: *Bulletin of the Seismological Society of America*, **90**, p. 425–449, doi:10.1785/0119990022.
- Boles, J. R., G. Garven, H. Camacho and J.E. Lupton, Mantle helium along the Newport-Inglewood fault zone, Los Angeles basin, California: A leaking paleo-subduction zone, *Geochem. Geophys. Geosyst.*, **16**, 2364–2381, doi:10.1002/2015GC005951 (2015).
- Bryant, W. A. (compiler), 2005, Digital Database of Quaternary and Younger Faults from the Fault Activity Map of California, version 2.0: accessed July 2010 from California Geological Survey Web Page, [http://www.consrv.ca.gov/cgs/information/publications/Pages/QuaternaryFaults\\_ver2.aspx](http://www.consrv.ca.gov/cgs/information/publications/Pages/QuaternaryFaults_ver2.aspx).
- Çemen, I., Near-surface expression of the eastern part of the San Cayetano fault: A potentially active thrust fault in the California Transverse Ranges, *Journal of Geophysical Research*, **94**(B7): 9665 (1989).

- Dolan, J.F., J.H. Shaw and T.K. Rockwell, The Ventura Region Special Fault Study Area: Towards an understanding of the potential for large, multi-segment thrust ruptures in the Transverse Ranges, *2012 SCEC Annual Meeting Proc. & Abstracts*, **XXII**, p.99-100 (2012).
- Grant-Ludwig, L., J.N. Brune, A. Anooshehpour, M.D. Purvance, R.J. Brune and J.C. Lozos, Reconciling Precariously Balanced Rocks (PBRs) with large earthquakes on the San Andreas fault system, *Seismological Research Letters*, **86**, n.5, doi: 10.1785/0220140239, 9 pp. (2015).
- Grigsby, F.B., Structural development and the Ventura Avenue anticlinal trend at the San Miguelito and Rincon oil fields, Ventura County, California, in *Santa Barbara and Ventura Basins: Tectonics, Structure, Sedimentation, Oilfields Along an East-West Transect*, A.G Sylvester and G.C. Brown, eds., *Coast Geological Survey Guidebook 64*, p. 111-124 (1988).
- Hamling, I.J., Hreinsdóttir, S., Clark, K., Elliott, J., Liang, C., Fielding, E., Litchfield, N., Villamor, P., Wallace, L. and Wright, T.J., Complex multi-fault rupture during the 2016 Mw7.8 Kaikōura earthquake, New Zealand. *Science*, **356**(6334): eaam7194 (2017).
- Hart, P. E., and J. R. Childs (2005), National archive of marine seismic surveys (NAMSS): Status report on U.S. Geological Survey program providing access to proprietary data, *Eos Trans. AGU*, **86**, Abstract S41A-10.
- Hauksson, E., W. Yang and P. Shearer, Waveform relocated earthquake catalog for Southern California (1981 to June 2011), *Bull. Seismol. Soc. Am.*, **v.102**, n.4, p.2239-2238, doi:10.1785/0120110241, 2012.
- Hopps, T.E., H.E. Stark, and R.J. Hindle, *Subsurface geology of Ventura Basin, California, Ventura Basin Study Group Report*, 45 pp., 17 structure contour maps and 84 structure panels comprising 21 cross sections, Rancho Energy Consultants, Inc., Santa Paula, CA, 1992 (<http://projects.eri.ucsb.edu/hopps/>).
- Hubbard, J., Structural linkage of onshore and offshore thrust systems across the Ventura fault and prospects for large earthquakes in the Transverse Ranges, *2011 SCEC Annual Meeting Proc. & Abstracts*, **XXI**, p.7 (2011).
- Hubbard, J., J.H. Shaw, J.F. Dolan, T.L. Pratt, L. McAuliffe and T. Rockwell, Structure and seismic hazard of the Ventura Avenue anticline and Ventura fault, California: Prospect for large, multisegment ruptures in the Western Transverse Ranges, *Bull. Seismol. Soc. Am.*, **104**, n.3, doi:10.1785/0120130125 (2014).
- Johnson, S.Y., P. Dartnell, et al., California State Waters Map Series -- Offshore Ventura and Carpenteria, California, *USGS Scientific Investigations Maps 3254 & 3261*, <http://pubs.usgs.gov/sim/3254/>, 2013.
- Kamerling, M.J., C.C. Sorlien, and C. Nicholson (1998), Subsurface faulting and folding onshore and offshore of Ventura basin: 3D map restoration across the Oak Ridge fault, *SCEC 1998 Annual Meeting Report*, p.68-69.
- Kamerling, M.J., C.C. Sorlien and C. Nicholson (2003), 3D development of an active oblique fault system, northern Santa Barbara Channel, California, *Seismol. Res. Lett.*, **v. 74**, n.2, p. 248.
- Lozos, J.C., A case for historic joint rupture of the San Andreas and San Jacinto faults, *Science Advances*, **2**, e150061, pp. 1-7 (2016).
- Lozos, J.C. and D.D. Oglesby, Seemingly minor details of fault geometry may strongly affect rupture propagation, *Seismol. Res. Lett.*, **83**, n.2, p.370, 2012.
- Lozos, J., K.B. Olsen, D.D. Oglesby and J.N. Brune, Rupture and ground motion models on the Claremont-Casa Loma stepover of the San Jacinto fault, incorporating complex fault geometry, stresses, and velocity structure, *2013 SCEC Annual Meeting Proceedings & Abstracts*, **XXIII**, poster 149, p.127 (2013).
- Marshall, S.T., G.J. Funning, H.E. Krueger, S.E. Owen and J.P. Loveless, Mechanical models favor a ramp geometry for the Ventura-Pitas Point fault, California, *Geophys. Res. Lett.*, **44**, doi:10.1002/2016GL072289 (2017).
- Marshall, S.T., G.J. Funning and S.E. Owen, Fault slip rates and interseismic deformation in the western Transverse Ranges, California, *J. Geophys. Res.*, **v.118**, p.4511-4534, doi:10.1002/jgrb.50312 (2013).
- McAuliffe, L., J. Dolan, T. Pratt, J. Hubbard, and J. H. Shaw (2011). Characterizing the recent behavior and earthquake potential of the blind western San Cayetano and Ventura fault systems (abstract). Fall Meeting AGU (Abstract T11A-2279).
- Nicholson, C., Updating Active 3D Fault Geometry in Special Fault Study Areas and Improving the SCEC Community Fault Model (CFM), *2014 SCEC Annual Report*, **n.14015**, 8 pp (2015).
- Nicholson, C., E. Hauksson, and A. Plesch, Revised 3D fault models for the Southern San Andreas fault system extending from San Geronio Pass to the Salton Sea, *Pacific Section AAPG-GSA Cordilleran Joint Meeting Abstracts w/Program*, **v.42**, n.4, Abstract 21-8, p.69, Anaheim, CA (2010).
- Nicholson, C., E. Hauksson and A. Plesch, Active fault geometry and crustal deformation in San Geronio Pass: The view from below and in 3D from seismicity, *SCEC SFSA Workshop on San Geronio Pass*, June (2012).
- Nicholson, C. and M.J. Kamerling, Reliability of 2D kinematic fold models to infer deep fault structure in the western Transverse Ranges, California, *Proceedings of the NEHRP Conference and Workshop on the Northridge, California Earthquake of January 17, 1994*, **v. II**, p. 299–306 (1998).



- Nicholson, C., M.J. Kamerling, C.C. Sorlien, T.E. Hopps and J.-P. Gratier, Subsidence, compaction and gravity-sliding: Implications for 3D geometry, dynamic rupture and seismic hazard of active basin-bounding faults in southern California, *Bulletin of the Seismological Society of America*, **97**, n.5, p.1607-1620 (2007).
- Nicholson, C., A. Plesch, C. Sorlien, J.H. Shaw and E. Hauksson, Updating the 3D fault set for the SCEC Community Fault Model (CFM-v4) and revising its associated fault database, *2013 SCEC Annual Meeting Proceedings & Abstracts*, **XXIII**, poster 123, p.134 (2013).
- Nicholson, C., A. Plesch, C.C. Sorlien, J.H. Shaw and E. Hauksson, The SCEC 3D Community Fault Model (CFM Version 5.0): An updated and expanded fault set of oblique crustal deformation and complex fault interaction for southern California, *Eos (Transactions of AGU)*, **95** (52), Abstract T31B-4584 (2014).
- Nicholson, C., A. Plesch, C.C. Sorlien, J.H. Shaw and E. Hauksson, The SCEC Community Fault Model Version 5.0: An updated and expanded 3D fault set for southern California, *2015 Pacific Section AAPG Joint Meeting Program*, p.77, Oxnard, CA (2015).
- Nicholson, C., C.C. Sorlien, T.E. Hopps and A.G. Sylvester, Anomalous Uplift at Pitas Point, California: Whose fault is it anyway?, *2015 SCEC Annual Meeting Proceedings & Abstracts*, **XXV**, poster 221, p.171 (2015).
- Plesch, A., C. Nicholson, J.H. Shaw, E. Hauksson and P.M. Shearer, New developments for the SCEC Community Fault Model and its associated fault database, *2010 SCEC Annual Meeting Proceedings & Abstracts*, **XX**, p.261-262 (2010).
- Plesch, A., J.H. Shaw, C. Nicholson, C.C. Sorlien, and SCFM Workshop Participants, Release & Evaluation of the Statewide Community Fault Model (SCFM) Version 3.0 and Continued Updates to the SCEC CFM 5.0, *2015 SCEC Annual Meeting Proceedings & Abstracts*, **XXV**, poster 217, p.175 (2015).
- Plesch, A., J.H. Shaw, C. Benson, W.A. Bryant, S. Carena, et al., Community Fault Model (CFM) for Southern California, *Bulletin of the Seismological Society of America*, **97**, n.6, p.1793-1802 (2007).
- Redin, T., J. Forman and M.J. Kamerling, 2005, Santa Barbara Channel structure and correlation sections, Pacific Section AAPG Cross Sections CS-32 through CS-42, Bakersfield, CA.
- Rockwell, T., Large co-seismic uplift of coastal terraces across the Ventura Avenue Anticline: Implications for the size of earthquakes and the potential for tsunami generation, *2011 SCEC Annual Meeting Proceedings & Abstracts*, **XXI**, p.7 (2011).
- Rockwell, T., K. Wilson, L. Gamble, M. Oskin, and E. Haaker, Great earthquakes in the western Transverse Ranges of southern California on the Pitas Point-Ventura thrust system, *5th International INQUA Meeting on Paleoseismology, Active Tectonics and Archeoseismology (PATA)*, Busan, Korea (2014).
- Rockwell, T.K., K. Clark, L. GAMble, M.E. Oskin, E.C. Haaker and G.L. Kennedy, Large Transverse Range earthquakes cause coastal upheaval near Ventura, Southern California, *Bulletin of the Seismological Society of America*, **v.106**, n.6, doi: 10.1785/0120150378, 14 pp (2016).
- Rood, D., Geomorphic evidence for Recent deformation along the Southern San Cayetano fault, SCEC Ventura SFSA workshop, *2016 SCEC Annual Meeting Proceedings & Abstracts*, **XXVI**, p.113 (2016).
- Shaw, J.H., A. Plesch, et al., Unified Structural Representation of the southern California crust and upper mantle, *Earth & Planetary Science Letters*, **415**, doi:10.1016/201501016 (2015).
- Sorlien, C.C., J.T. Bennett, M.-H. Cormier, B.A. Campbell, C. Nicholson and R.L. Bauer, Late Miocene-Quaternary fault evolution and interaction in the Southern California Inner Continental Borderland, *Geosphere*, **v.11**, n.4, doi:10.1130/GES01118.1 (2015).
- Sorlien, C.C. and C. Nicholson, Post-1 Ma deformation history of the Pitas Point-North Channel-Red Mountain fault system and associated folds in Santa Barbara Channel, California, *USGS Final Technical Report*, Award G14AP00012, 24 pp. (2015).
- Sorlien, C.C., C. Nicholson, M.J. Kamerling and R.J. Behl, Strike-slip displacement on gently-dipping parts of the Hosgri fault and fold-related relief growth patterns above the blind oblique-slip North Channel-Pitas Point-Red Mountain fault system, *2015 SCEC Annual Meeting Proceedings & Abstracts*, **XXV**, poster 220, p.185 (2015).
- Sorlien, C.C. and M.J. Kamerling, M. J., Fault displacement and fold contraction estimated by unfolding of Quaternary strata, onshore and offshore Ventura basin, California, *Final Technical Report to U.S. Geological Survey NEHRP*, contract 99HQGR0080 (2000).
- Sorlien, C.C., C.J. Marshall, C. Nicholson et al., Post-1 Ma deformation history of the anticline forelimb above the Pitas Point-North Channel fault in Santa Barbara Channel, California, *2012 SCEC Annual Meeting Proceedings & Abstracts*, **XXII**, p.139-140 (2012).
- Yang, W., E. Hauksson and P. Shearer, Computing a large refined catalog of focal mechanisms for Southern California (1981–2010): Temporal stability of the style of faulting, *Bull. Seismol. Soc. Am.*, **v.102**, n.3, p.1179-1194, doi:10.1785/0120110311, 2012.