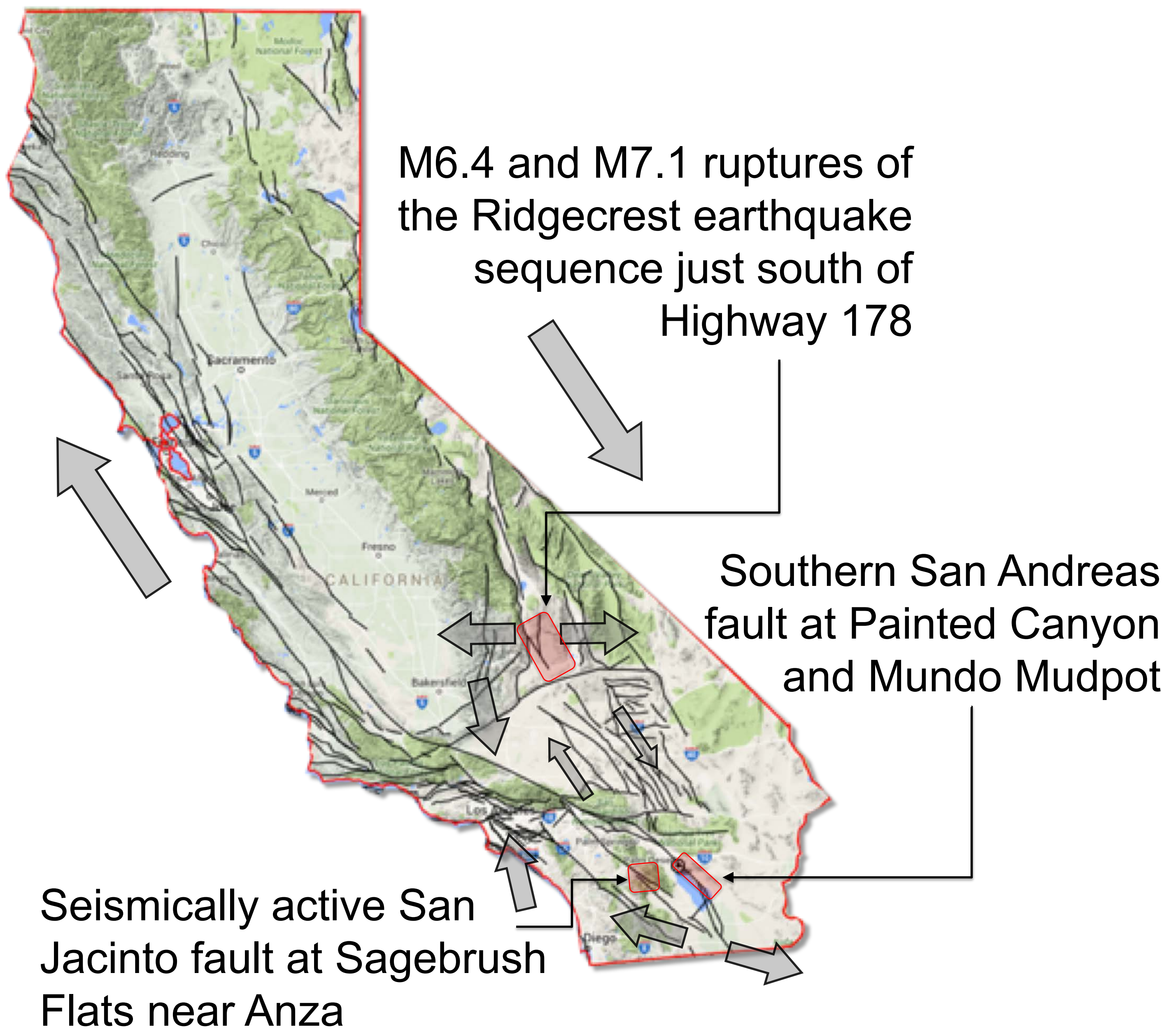
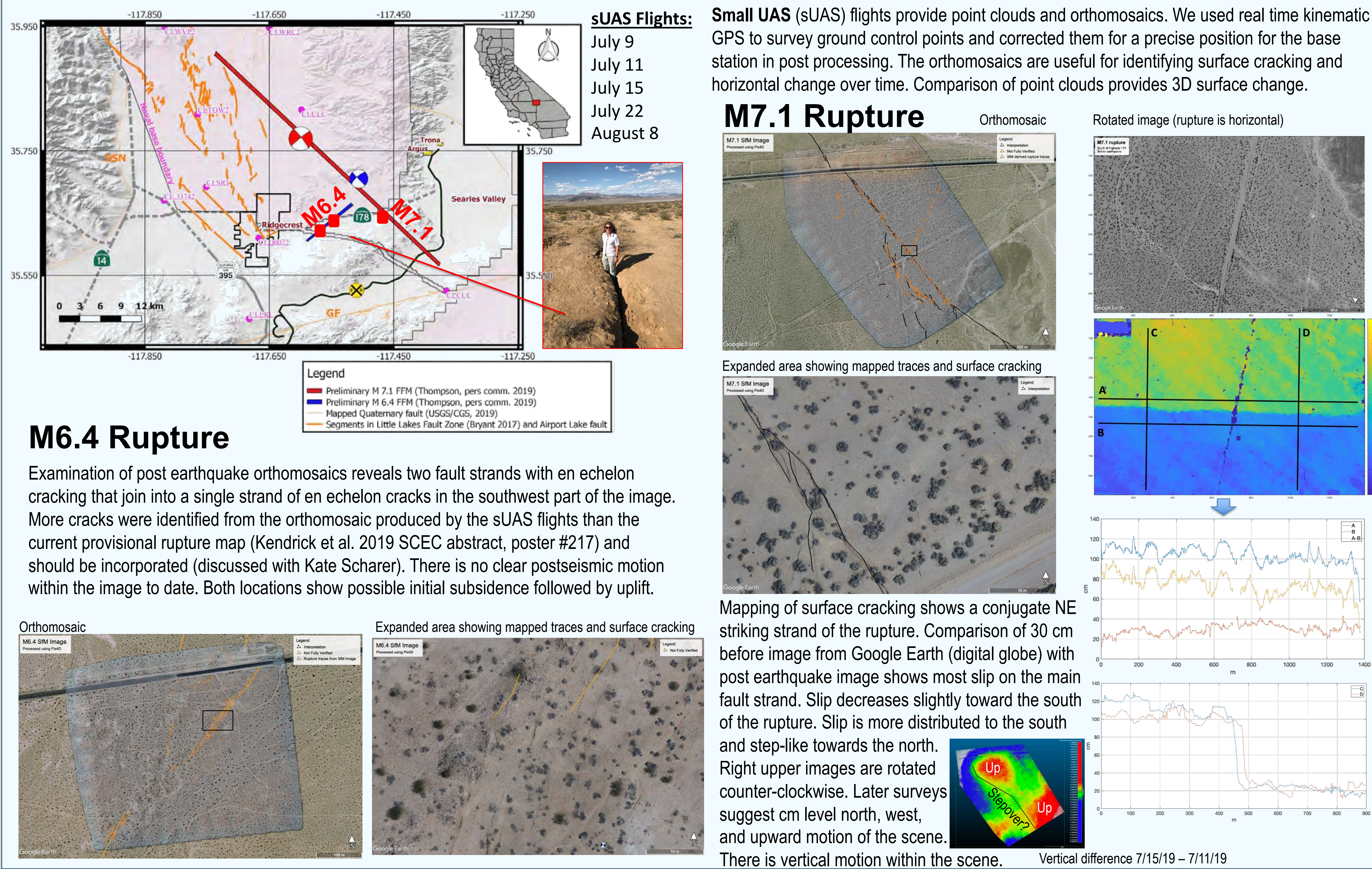


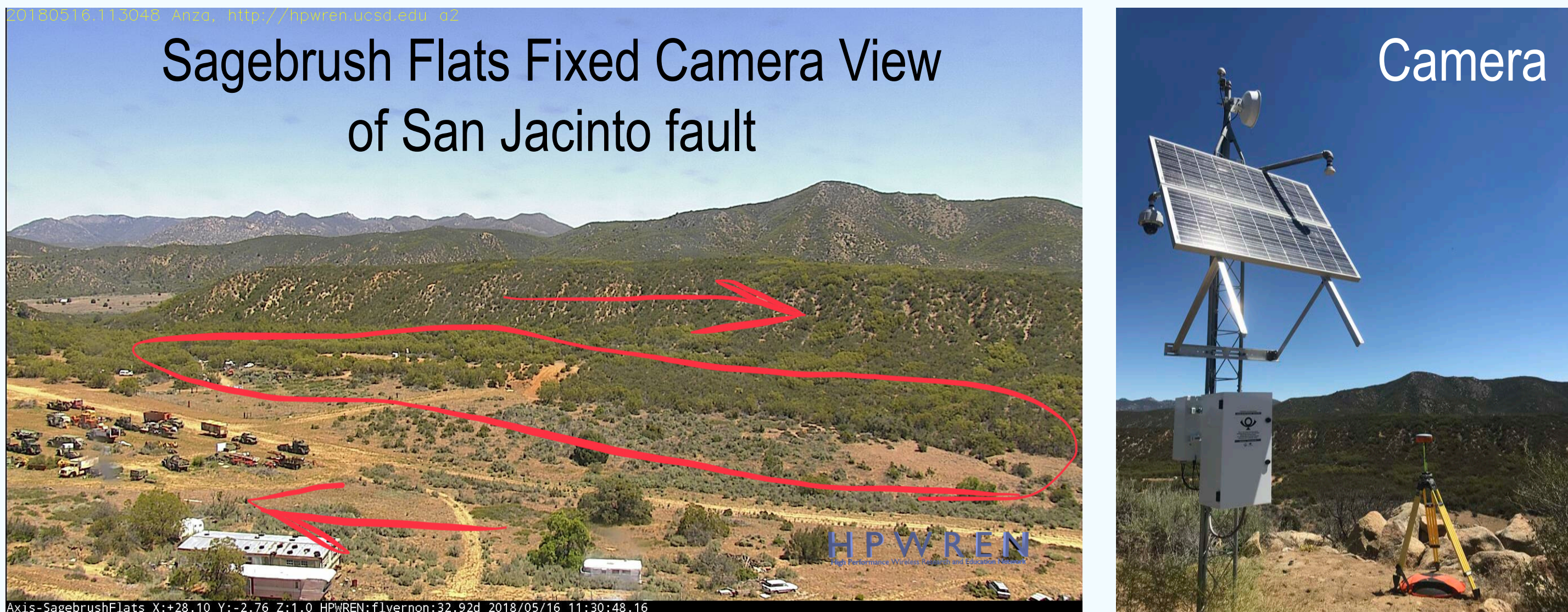
STUDY LOCATIONS



M7.1 AND M6.4 RUPTURES SOUTH OF HIGHWAY 178

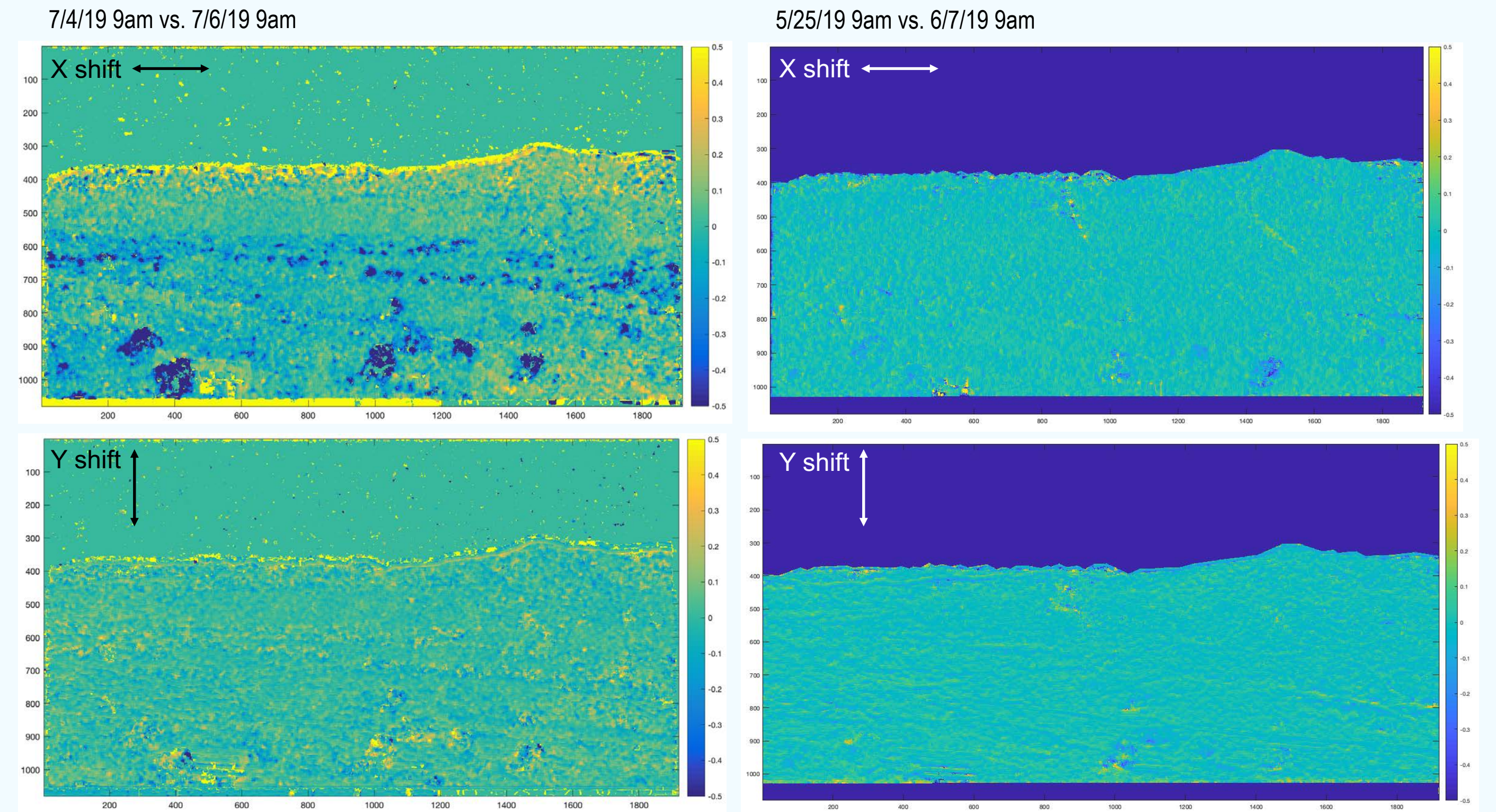


SAND JACINTO FAULT NEAR ANZA



Comparisons Spanning and Before the Earthquakes

A camera pointed at the seismically active San Jacinto fault records an image every 10 s. The fault strands are highlighted in the x shift spanning the Ridgecrest earthquake sequence suggesting disruption of vegetation within the fault core damage zone. Comparison of pairs not spanning the earthquake do not illuminate the fault zone. We will investigate whether windy days also illuminate the fault zone.



PAINTED CANYON AND MOVING MUNDO MUDPOT

