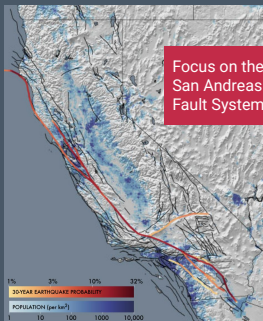




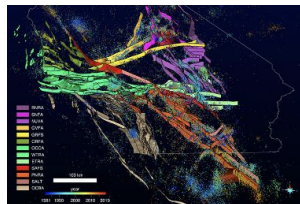
Community Engagement & Workforce Development

SCEC's mission is to develop and share cutting-edge earthquake system science to enhance California's resilience and to educate and inspire future scientists.

SCEC's Natural Laboratory and Study Area



Earthquake System Science and Innovation



SCEC integrates new research and technologies to enhance predictive system-level models and simulations to synthesize knowledge and quantify seismic hazards.

Education and Workforce Development



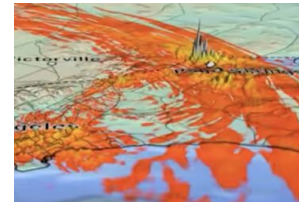
SCEC prepares the next generation of scientists through transformative research experiences, community building, and professional skills development.

Outreach and Community Engagement



SCEC engages stakeholders across geoscience and related fields through workshops, drills, and collaborations to advance earthquake science, education, and preparedness.

Earthquake Preparedness and Risk Reduction



SCEC bridges the gap between cutting-edge science and preparedness for a more resilient California, through education, research, and more realistic earthquake simulations.



Mark Benthien

Associate Director for Public Education & Preparedness



Tran Huynh

Associate Director for Science Operations



Gabriela Noriega

Associate Director for Experiential Learning & Career Advancement

**Build earthquake resilience
through collaboration,
talent development,
and technology**



ND
NK
Giving Hope.

FOOD
BANK
Fighting Hunger. Giving Hope.

FOOD
BANK
Fighting Hunger. Giving Hope.

FOOD
BANK
Fighting Hunger. Giving Hope.

FOOD
BANK
Fighting Hunger. Giving Hope.

FOOD
BANK
Fighting Hunger. Giving Hope.

FOOD
BANK
Fighting Hunger. Giving Hope.

FOOD
BANK
Fighting Hunger. Giving Hope.

FOOD
BANK
Fighting Hunger. Giving Hope.

FOOD
BANK
Fighting Hunger. Giving Hope.

Earthquake Country Alliance

Working to Improve and Teach Education and Preparedness

Earthquake Terremotos

Regional Statewide Educational

Shake Out

Tsunami Zone

LOS ANGELES REGIONAL
FOOD BANK
Fighting Hunger. Giving Hope.

LOS ANGELES REGIONAL

FOOD BANK
Fighting Hunger. Giving Hope.

If you feel shaking or get an alert:

EarthquakeCountry.org 5
Terremotos.org / pas

possible

PI! COV

ane

ROP! COV

Walker

Get Ready to ShakeOut.

October 16, 2025

Register: **ShakeOut.org**

Shake Out



Bridging Science & Society



ShakeOut. Don't Freak Out.
October 16, 2025 Register now at ShakeOut.org



ShakeOut Participants in 2024

- 56.5 M Worldwide
- 18.9 M United States
 - 3.1 M Colleges & Universities
 - 12 M from US K-12 Schools & Districts
 - 2.1M from Local/State/Federal Gov
 - 10,728 from Neighborhood Groups
 - 122,108 from Faith-based Organizations
 - 21,075 from Preparedness Organizations
 - 11,211 from Science/Engineering Organizations
 - 420,487 from Businesses
 - 773,848 from Healthcare Organizations
- 10.7 M California





Workforce Development & Community Building

2025 SCEC Internships Cohort



Harini Pootheri
Cal Poly Pomona



Dev Raja
Cypress College



Allison Schiffmaier
Folsom College



Yajaira De Haro
San Jose State



Ana Sotelo Romero
Cal Poly Pomona



Neeraja Vasa
Uni of Utah



Khant Nyi Hlaing
Pasadena City College



Natasha Tiwari
UC Berkeley



Katie Baraggiotta
CSU Long Beach



America Lopez
Pasadena City College



Joy Ndamukunda
Uni of So. California



Lissette Ochoa
UC San Diego



Mario Chong Loo
East Los Angeles College

Experiential Learning

748 Internships Awarded
since 1994

Comprehensive Recruitment

233 Institutions Reached
100 Community Colleges

Research Travel Awards

\$77,587 Granted
since 2019
18 for SCEC2025!

Mentorship & Networking

26 Networking Events,
Mentorship Trainings, & Career
Development Workshops
Since 2019

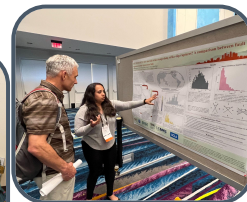
Intern Field Trip



Breakfast Club



Team-Based Learning



Research Presentation

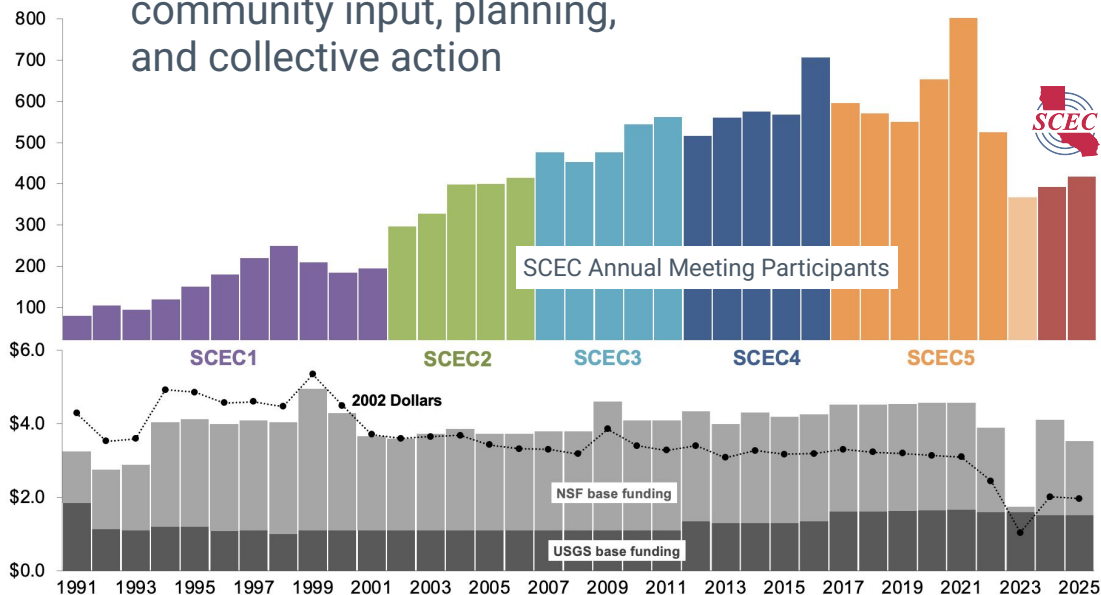
2025

STATEWIDE CALIFORNIA
EARTHQUAKE CENTER

Showcase SCEC community projects in earthquake system science, education, and engagement

Strengthen collaborations across boundaries and support early career researchers and students

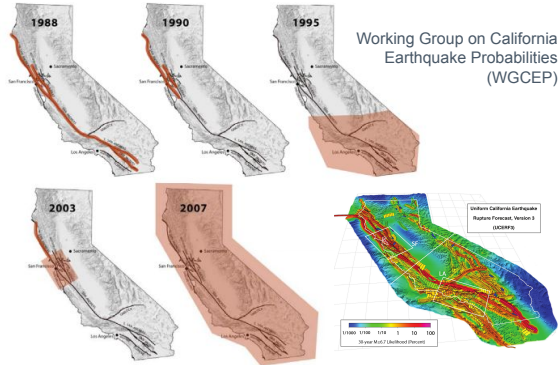
Shape future Center priorities through community input, planning, and collective action



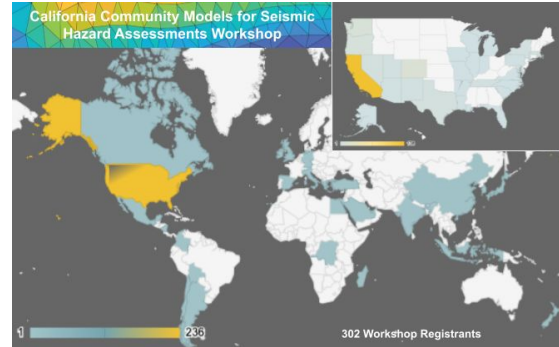


Cultivating a Collaborative Research Community

Special Study Areas



Community Workshops & Trainings

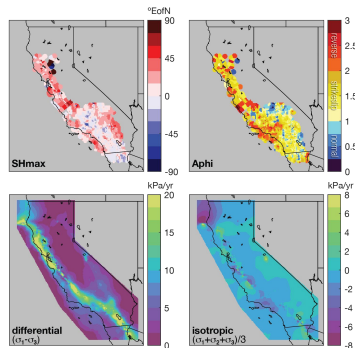


Technical Activity Groups

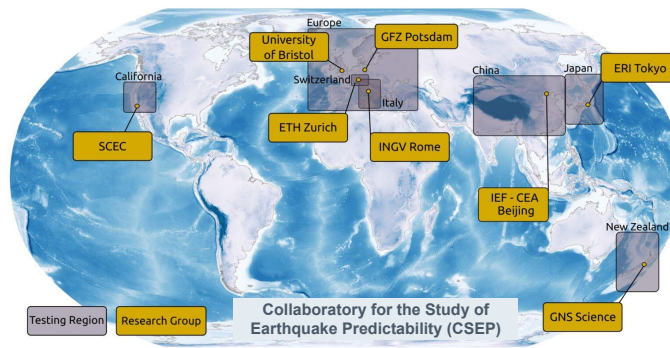
A Suite of Exercises for Verifying Dynamic Earthquake Rupture Codes

by Ruth A. Harris, Michael Barall, Brad Aagaard, Shuo Ma, Daniel Roten, Kim Olsen, Benchun Duan, Dunyu Liu, Bin Luo, Kangchen Bai, Jean-Paul Ampuero, Yoshihiro Kaneko, Alice-Agnes Gabriel, Kenneth Duru, Thomas Ulrich, Stephanie Wollherr, Zheqiang Shi, Eric Dunham, Sam Bydlon, Zhenguo Zhang, Xiaofei Chen, Surendra Nadh Somala, Christian Pelties, Josué Tago, Victor Manuel Cruz-Atienza, Jeremy Kozdon, Eric Daub, Khurram Aslam, Yuko Kase, Kyle Withers, and Luis Dalguer

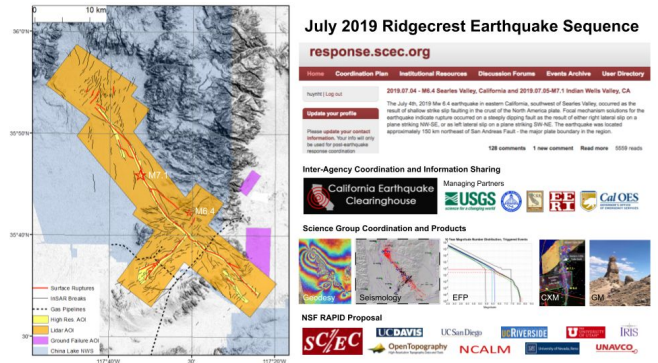
Community Models

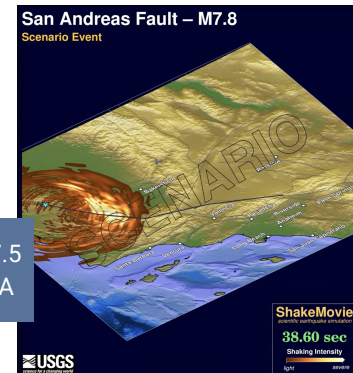
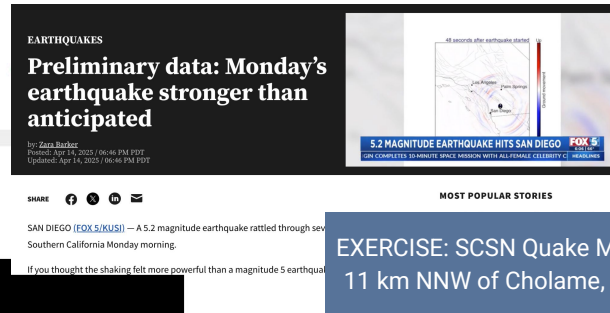
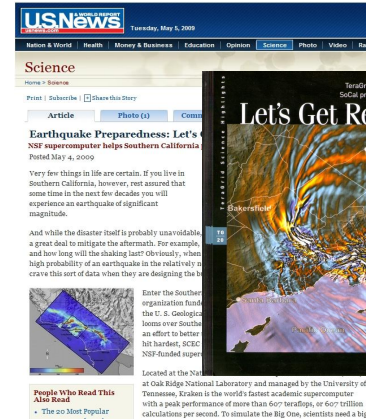
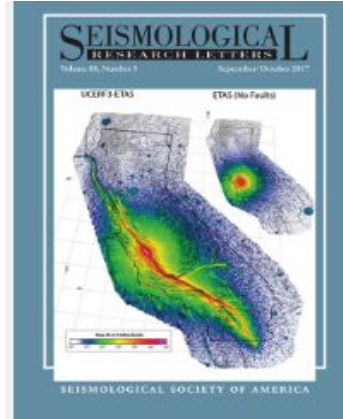
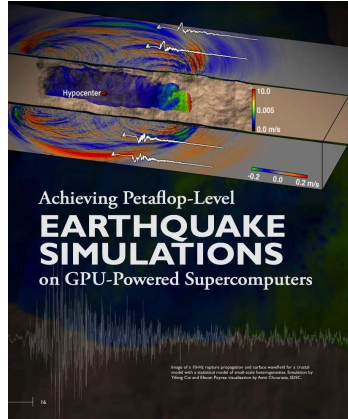


Community Experiments & Evaluation Metrics



Post-Earthquake Investigations





Research computing enhances hazard analysis, response planning, and public outreach



Mark



Edward



Gaby



Xaul



Tran



Edric



Deborah



Phoebe



Akash



Scott



Fabio



Mei



Xiaofeng



Te-Yang



Camilo



Phil Maechling
Associate Director for RC

To boldly go where no SCEC has gone before

Go Forth & Engage

Send in your
Twin Sightings!



Add to SCEC2025
photo album

