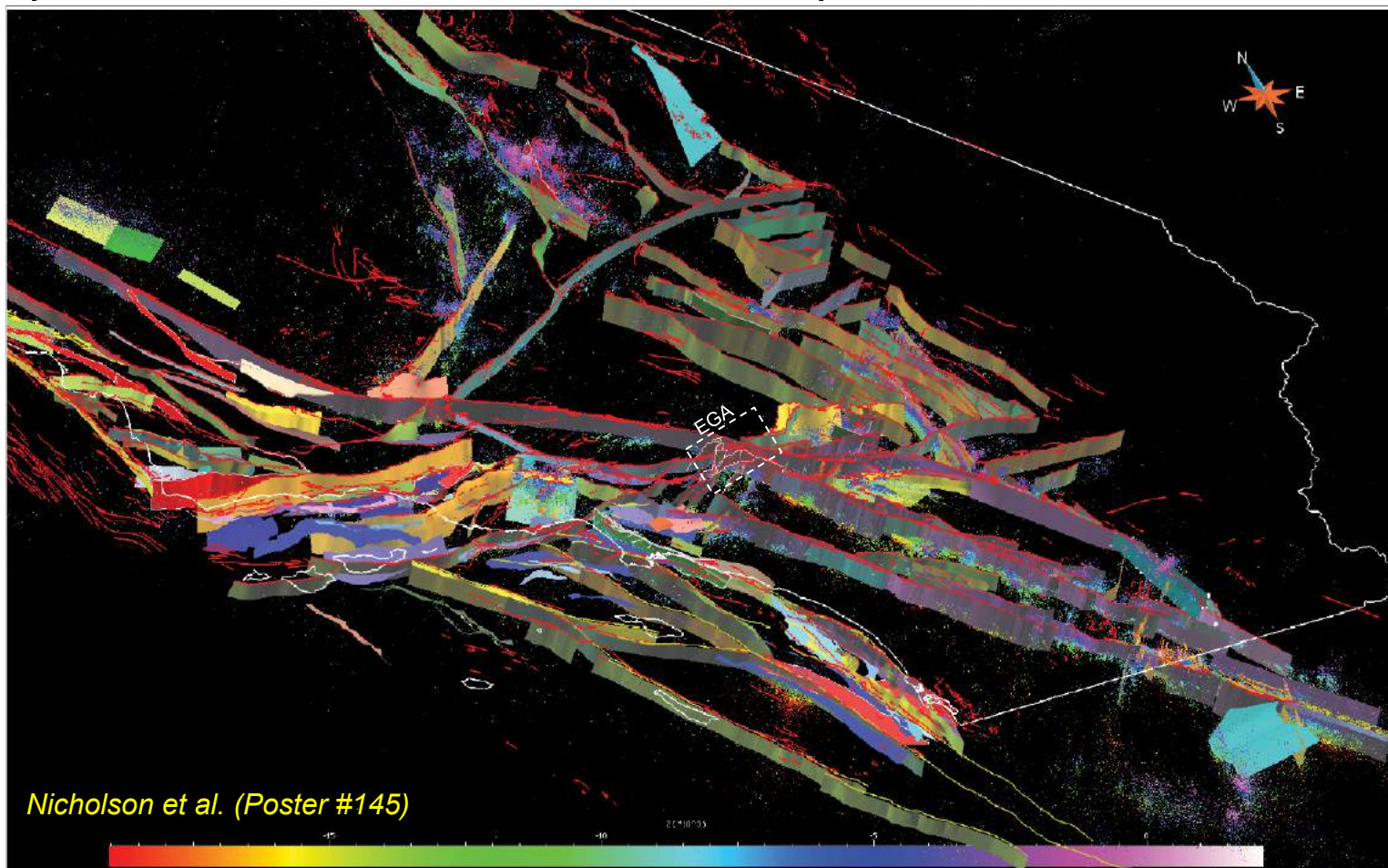


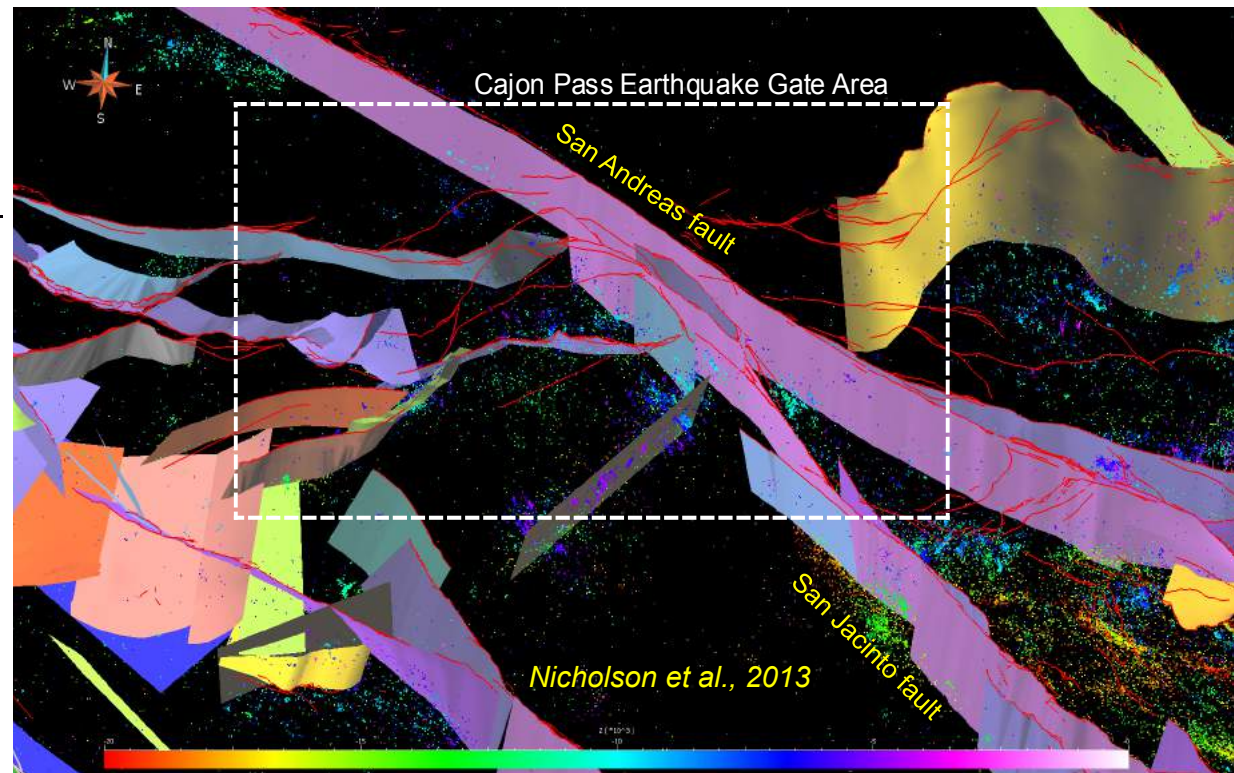
Updated SCEC CFM v.5.2 Fault Representations for 2018



Previous CFM-v.4.0 fault representations within the Cajon Pass Earthquake Gate Area

New CFM Webpage at:
www.scec.org/research/cfm

GOOGLE “SCEC CFM” to
download CFM 3D fault set
and access links to view the
CFM in 3D

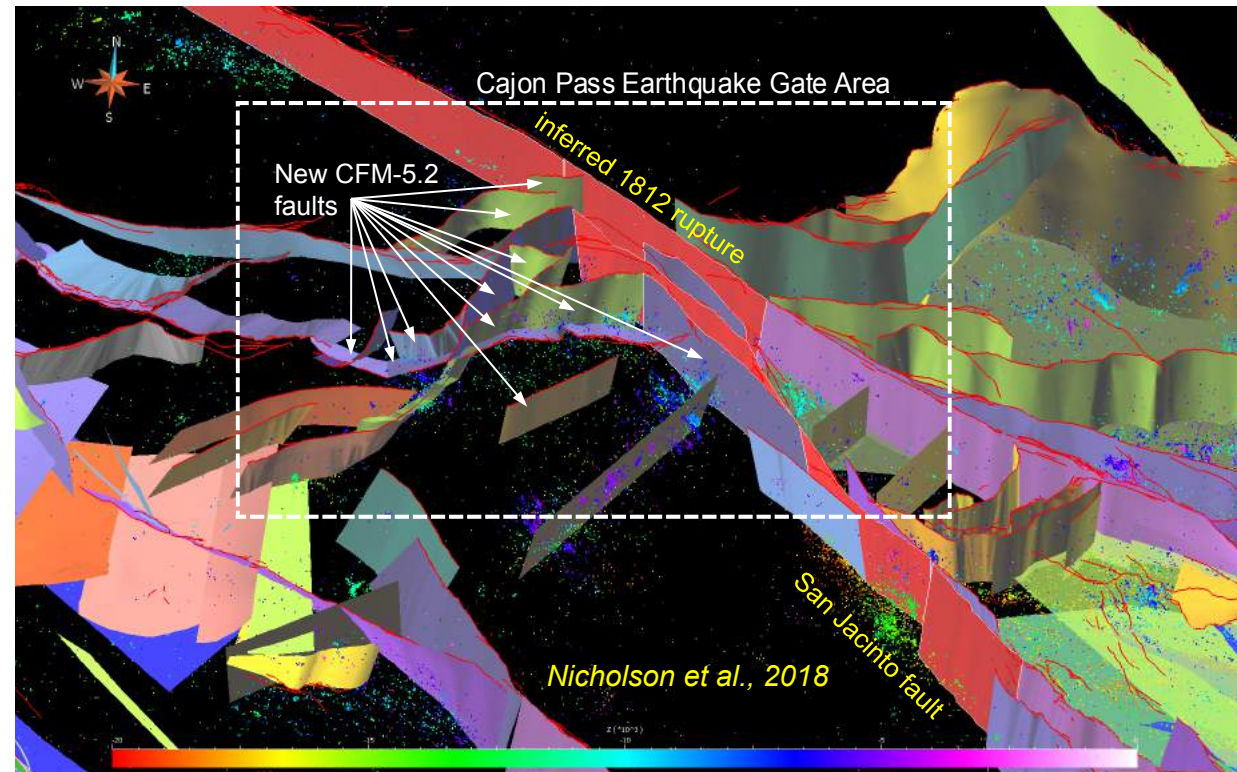


Oblique 3D map view of older CFM-v.4.0 fault representations in the Cajon Pass EGA. Note limited number of adjacent secondary faults within the Eastern & Western Transverse Ranges and absence of low-angle detachments (present in newer CFM-v.5.2 fault set) that could otherwise influence stress and slip distribution on major faults through Cajon Pass.

Updated CFM-v5.2 3D fault set & revised 1812 rupture model within the Cajon Pass EGA

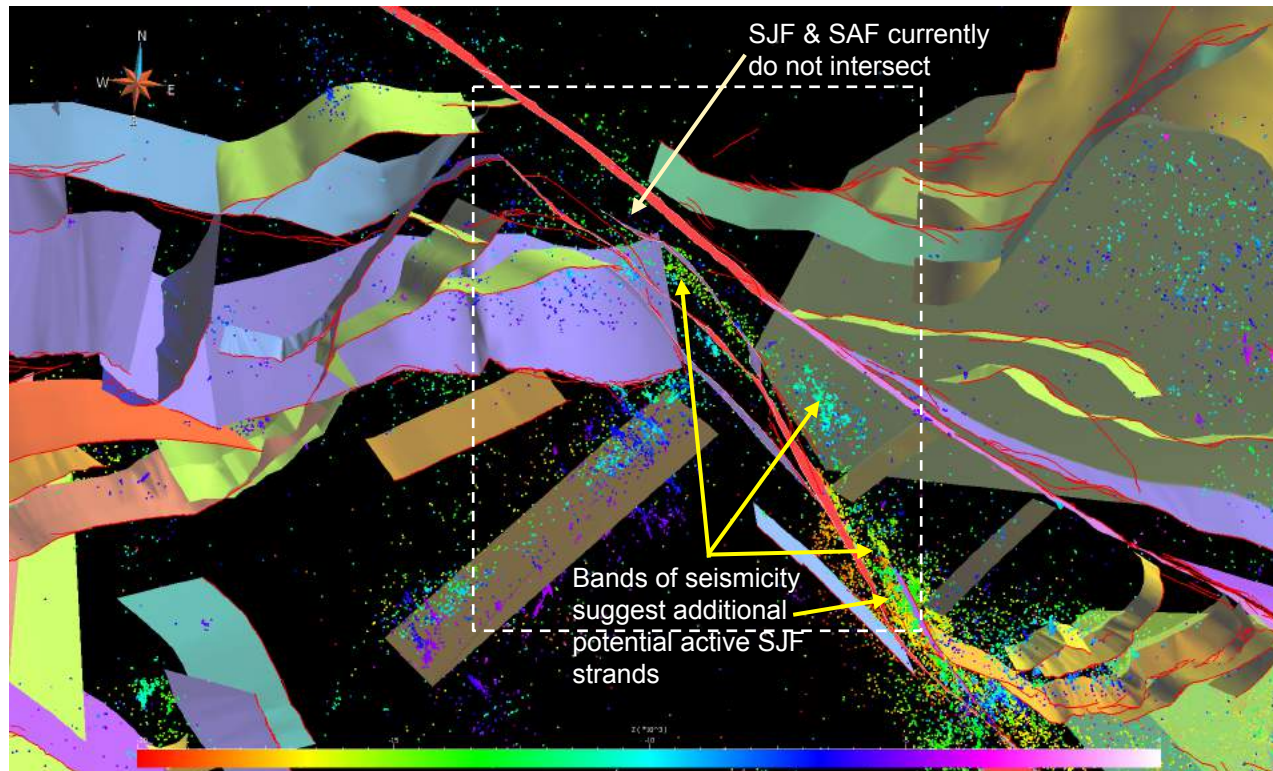
New CFM Webpage at:
www.scec.org/research/cfm

GOOGLE “SCEC CFM” to
download CFM 3D fault set
and access links to view the
CFM in 3D



Oblique 3D view of updated CFM-v5.2 fault representations in the Cajon Pass EGA. Many newer adjacent secondary faults and low-angle detachments were added to the CFM 3D fault set since CFM-v4.0. Red-colored sections of the San Andreas & San Jacinto faults represent the updated rupture model for the 1812 earthquake [Grant-Ludwig et al., 2015; Lozos, 2016].

Issues of 3D Fault Geometry in the Cajon Pass Earthquake Gate Area



**Nicholson et al.
(Poster #145)**

**Do the San Andreas (SAF) and San Jacinto (SJF) faults intersect or not? Does it matter?
Is the SJF more multi-stranded in the Cajon Pass EGA than currently represented in CFM?
What is the influence of secondary structures? In CFM, the SAF and SJF currently do not intersect.**