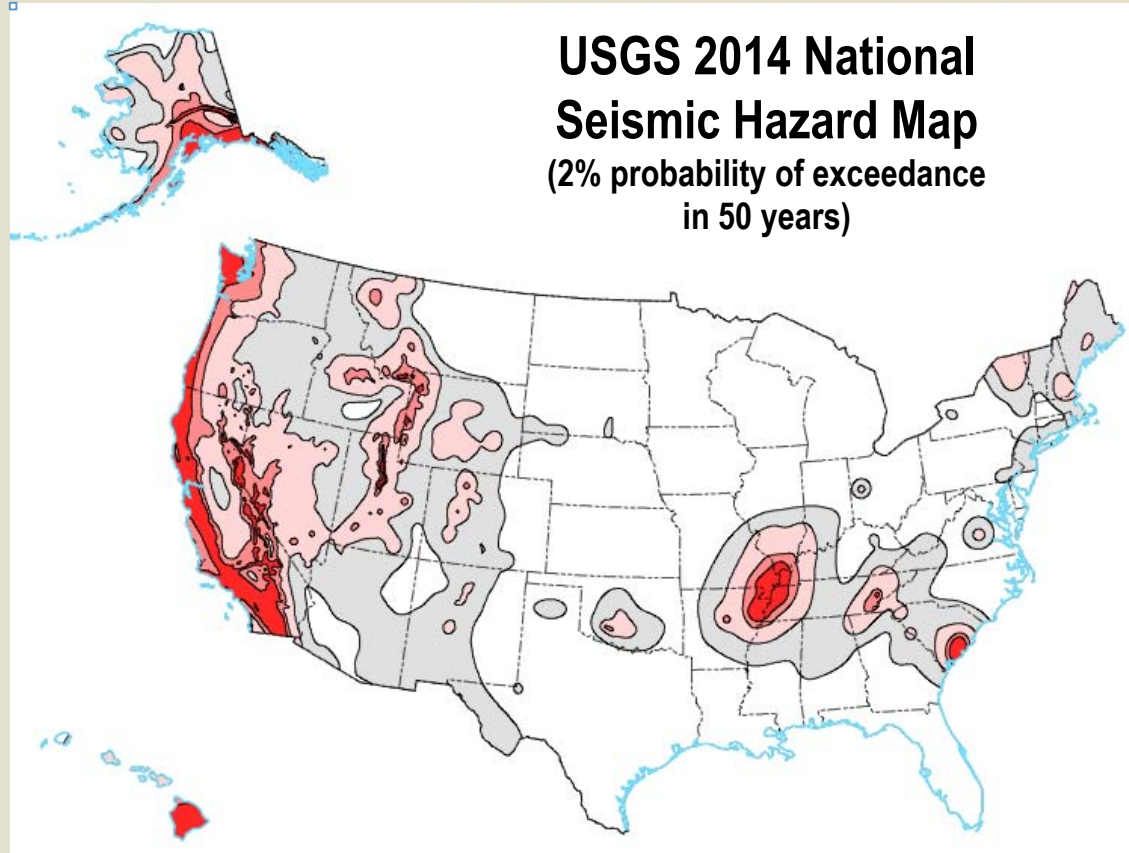


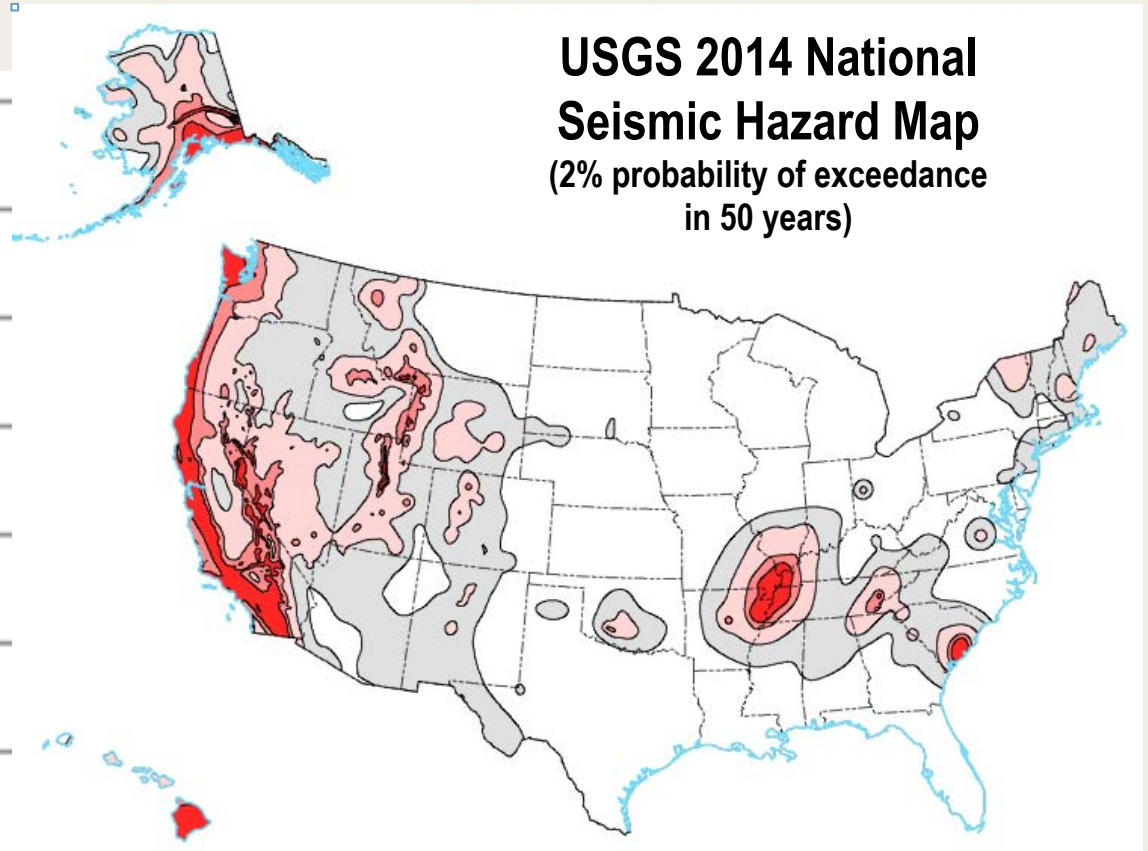
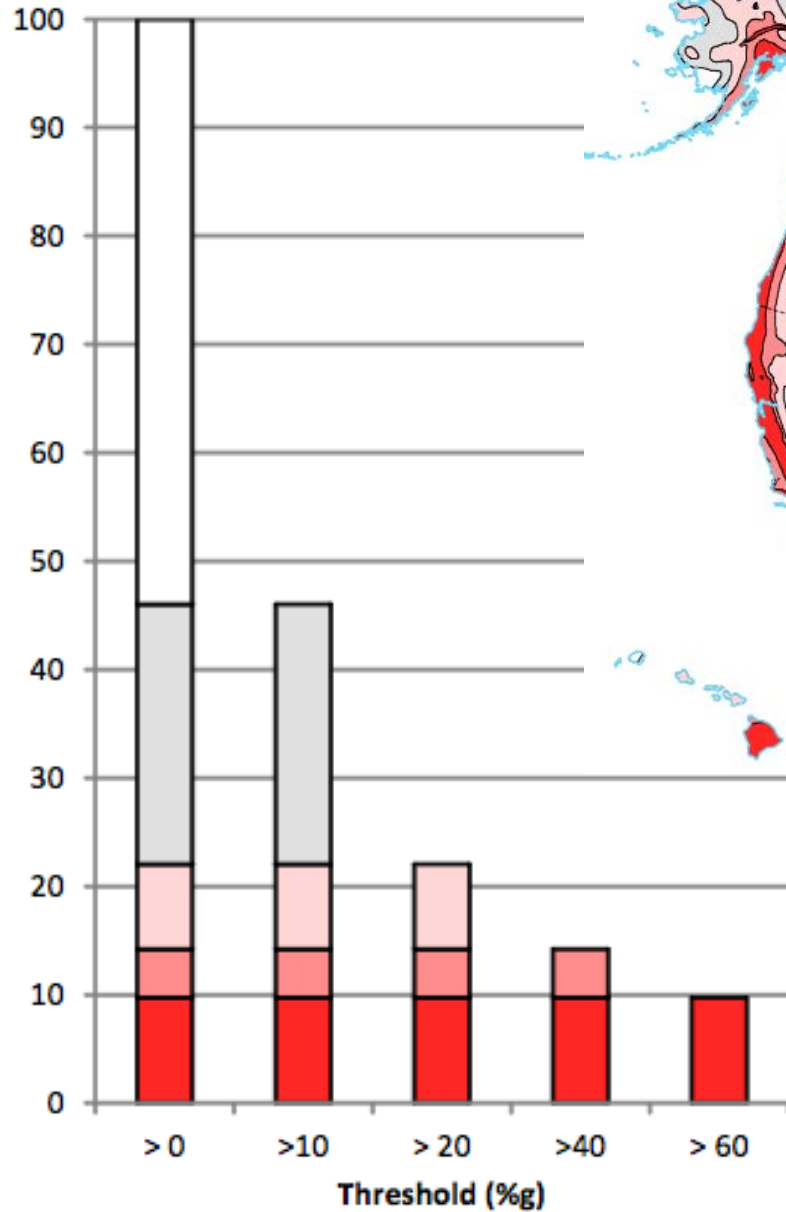
**USGS 2014 National
Seismic Hazard Map**
(2% probability of exceedance
in 50 years)



“More than 75 million Americans
in 39 states are subject to
significant risks from earthquakes”

No, about 150 million Americans,
in 39 states and territories are subject to
significant risks from earthquakes
(nearly half of the population)

Percent of 2012 population (U.S. states)



Nearly half of Americans live in areas where potentially damaging ground motions may occur in the next 50 yrs.

One-in-ten Americans live in areas mapped for 60%g and higher in 50 yrs.

In 18 U.S. States and Territories, more than one-half million people are exposed to ground motions over 20%g in 50 years

State	2012 Popul.	> 10% g	> 20% g	> 40% g	> 60% g	pct >60%g
Puerto Rico	3,651,545	3,650,924	3,554,369	3,018,076	2,985,564	82%
California	37,863,332	37,856,896	36,849,432	30,456,802	24,901,986	66%
Alaska	731,733	709,638	650,209	561,398	472,539	65%
Utah	2,849,555	2,838,984	2,757,072	2,314,245	1,440,569	51%
Nevada	2,799,010	2,799,010	2,365,825	610,743	519,248	19%
Washington	6,852,767	6,852,767	5,677,098	4,853,938	1,044,183	15%
South Carolina	4,701,550	4,701,550	1,550,964	751,001	675,594	14%
Hawaii	1,392,340	1,369,727	1,323,906	189,191	175,599	13%
Arkansas	2,891,928	1,911,783	1,155,248	373,383	268,529	9%
Tennessee	6,397,665	6,383,569	3,652,473	1,993,688	449,074	7%
Oregon	3,922,338	3,922,338	3,536,283	1,422,073	196,955	5%
Missouri	6,044,200	3,047,537	2,144,925	319,586	229,254	4%
Kentucky	4,343,141	1,521,462	616,894	210,141	111,167	3%
Illinois	12,938,121	1,521,157	1,130,290	215,460	48,633	<1%
New Hampsh.	1,318,981	1,318,795	1,026,407	0	0	0%
Massachusetts	6,811,280	5,675,909	725,956	0	0	0%
Oklahoma	3,781,798	2,000,027	683,355	7,344	0	0%
Georgia	9,838,384	4,466,084	566,077	0	0	0%

USGS Budget

- 2014 Budget initiatives were funded by Congress
 - Induced seismicity +1.0M
 - ANSS products and Eastern U.S. +1.2M
 - Earthquake early warning (EEW) +850k
 - Congress did not restore 2013 sequestration cuts
- 2015 Budget request by the Administration
 - Flat, with \$700k redirect for induced seismicity
- Congressional Action on 2015:
 - Both houses propose a \$5M increase for EEW
 - House and Senate disagree on redirect for induced

Come to Washington!

