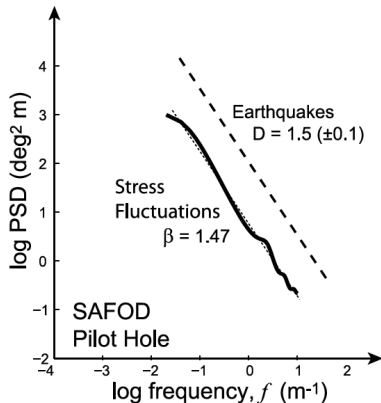
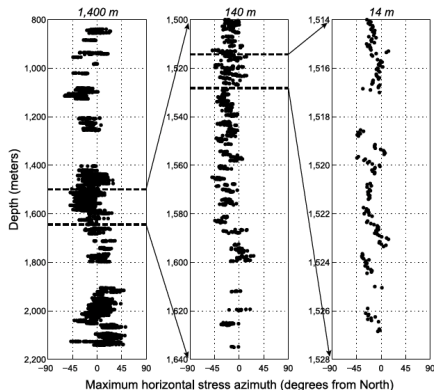


Observation of Stress Heterogeneity from SAFOD



Day-Lewis et al., GRL, 2010, doi:10.1029/2010GL045025

Stochastic Heterogeneity Discussion

- What observations can we use to constrain small-scale heterogeneity?
 - Over what range of length scales can we constrain the stress field?
 - What types of models can we develop to constrain small-scale features of the stress field?
- Is a statistical (stochastic) description of stress important for the the Community Stress Model?
- How would stochastic models of stress be represented?
 - Could stochastic models be merged with deterministic models?